



**MANUFACTURING CORPORATION**

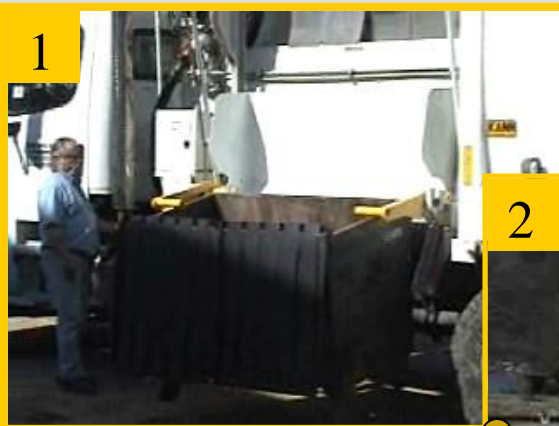
**REFUSE & RECYCLING BODY COMPANY**

Established 1946

**CURB MASTER SERIES**

# **KANN SIDE LOADER ADAPTER For Collection of Rear Load Containers**

**RETROFIT** any KANN residential single or dual side loader with the **KANN Adapter** and collect up to 3 cubic yard rear load containers ...  
**it's as easy as 1... 2... 3...**



*Same Patented Technology as the KANN Adapter used on KANN Front Loaders to collect rear load containers!*

*Easy to locate, pocket and clamp rear load containers for lift and unloading!*

**KANN Manufacturing Corporation**

210 Regent Street  
Post Office Box 400  
Guttenberg, IA 52052 USA

**For FREE Route Demonstration at Your Site Call 800-806-5266**

Phone 563-252-2035 Email [sales@kannmfg.com](mailto:sales@kannmfg.com)  
Fax 563-252-3069 Web [www.kannmfg.com](http://www.kannmfg.com)



# MANUFACTURING CORPORATION

## REFUSE & RECYCLING BODY COMPANY

Established 1946

### CURB MASTER SERIES

# COMMERCIAL REAR LOAD CONTAINER ADAPTER FOR KANN SINGLE OR DUAL SIDE LOADER



### KANN COMMERCIAL FRONT LOADER WITH KANN ADAPTER

The same patented KANN technology that for many years has allowed KANN front loaders to collect both front and rear load containers is now available for use on Kann side loaders!



The KANN side loader with the KANN rear load adapter attachment is designed to collect up to 3 cubic yard rear load containers with ease and efficiency!

### STANDARD FEATURES

#### FUNCTIONS

- Continuous Compactor Cycle
- Pack-on-the-go and Load-on-the-go Capability (Continuous Loading)
- 30 Second Eject Unload Cycle

#### STANDARD FEATURES

- Five Body Sizes Available 17, 21, 23, 27 and 31 yd<sup>3</sup>
- 4 yd<sup>3</sup> Hopper Capacity
- 97 Inch Body Height
- 96 Inch Body Width
- 30 ft<sup>2</sup> (4.3 ft x 7 ft) Hopper Opening
- Up to 1000 lbs/yd<sup>3</sup> Average Payload
- PTO or Front Mount Pump Driven
- Over-speed Protection
- Standard Wiring Package, Auto Reset Circuit Breakers and all Wiring Loom Protected
- Standard LED Light Package Complies with DOT/FMVSS Standards
- Dual Tailgate Safety Props
- Electric Controls
- Sight Temperature Gauge
- Tailgate Ajar/Over Height Alarm
- Hydraulic Over Heat Alarms

#### STANDARD FEATURES Continued

- Hydraulic Tailgate Locks with and Additional Manual Safety Lock
- Hydraulic Suction Line Shut-off Valve
- 100 Mesh Suction Strainer
- 10 Micron In-line Return Filter
- 55 Gallon Reservoir with Internal Baffles
- White PPG Paint over Primer

#### OPTIONS

- Residential Trough and/or tipper(s)
- Up to 96 Gallon Cart Grabber Attachment
- Camera – Single, Dual, and/or Hopper
- Safety Work Light Package
- Additional Axles
- Customized Paint and Decals
- Spill Kit Package

#### LOADING MECHANISM FEATURES

- 10 to 12 Second Loading Cycle
- 750 lb Lift Capacity
- Load up to 3 yd<sup>3</sup> Rear Load Containers
- Truck Always Under Legal Height Requirements
- Stowed Position is already at Cart Height for Quick and Easy Loading

### KANN Manufacturing Corporation

210 Regent Street  
Post Office Box 400  
Guttenberg, IA 52052 USA

For FREE Route Demonstration Call 800-806-5266

Phone 563-252-2035 Email [sales@kannmfg.com](mailto:sales@kannmfg.com)  
Fax 563-252-3069 Web [www.kannmfg.com](http://www.kannmfg.com)

To see the KANN side loader with rear load container adapter in action, go to the video clip found on



<http://www.youtube.com/watch?v=7QuGnG2HtU0>