



# MANUFACTURING CORPORATION

## REFUSE & RECYCLING BODY COMPANY

Established 1946

### PACK MASTER SERIES

### Model RL

# Rear Loader



KANN Model	Body			Configuration	Chassis	
	Body Volume yd <sup>3</sup>	Tailgate Volume yd <sup>3</sup>	Total Volume yd <sup>3</sup>		Minimum Rear Axle Ratings lbs (kgs)	Cab to Axle (CA) Distance Inch (mm)
RL8	8	2.5	10.5	4x2	26,000 11,800	108 (2743)
RL10	10	2.5	12.5	4x2	26,000 11,800	108 (2743)
RL12	12	3	15	4x2	26,000 11,800	108 (2743)
RL16	16	3	19	4x2	30,000 13,636	138 (3505)
RL20	20	3	23	4x2	30,000 13,637	168 (4267)
RL20	20	3	23	6x4	34,000 15,454	144 (3658)
RL25	25	3	28	6x4	34,000 15,455	174 (4420)

### KANN Manufacturing Corporation

210 Regent Street  
Post Office Box 400  
Guttenberg, IA 52052 USA

Phone 563-252-2035    Email [sales@kannmfg.com](mailto:sales@kannmfg.com)  
Fax 563-252-3069    Web [www.kannmfg.com](http://www.kannmfg.com)

Notes: - Minimum front axle rating is 10,000 lbs (4536 kgs) for all chassis with the exception of RL2-H models that will require heavier front axle.  
- \*CA distance for 6x4 chassis is from back of chassis cab to the center of the tandem set with 50" spacing



# MANUFACTURING CORPORATION

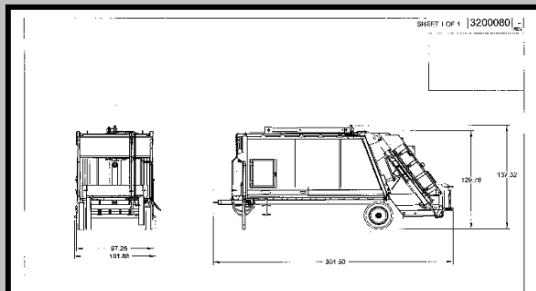
## REFUSE & RECYCLING BODY COMPANY

Established 1946

### PACK MASTER SERIES

### Model RL

# Medium Duty Rear Loader



**Kann RORO (Roll-On-Roll-Off) Ship Loose Trailer for Domestic or Export**



### STANDARD FEATURES

#### PERFORMANCE

- 23 Second Unload Dump Cycle
- 17 Second Packing Cycle Time
- 800 lbs/yd<sup>3</sup> Payload on Average

#### STANDARD FEATURES

- Six Body Sizes Available 8, 10, 12, 16, 20 and 25 yd<sup>3</sup>
- 2.5 to 3.0 yd<sup>3</sup> Hopper Capacity
- 86 Inch Body Height
- 96 Inch Body Width
- PTO or Front Mount Pump
- Over-speed Protection
- Standard Wiring Package, Auto Reset Circuit Breakers and all Wiring Loom Protected
- Standard LED Light Package Complies with DOT/FMVSS Standards
- 20 lb. Fire Extinguisher
- Dual Tailgate Safety Props
- Manual Controls

#### STANDARD FEATURES Continued

- Compression Control Hybrid Valve Packer Panel
- Tailgate Ajar/Over Height Alarm
- Sight Temperature Gauge
- Hydraulic Overheat Alarms
- Hydraulic Tailgate Locks
- Hydraulic Suction Line Shut-off Valve
- 100 Mesh Suction Strainer
- 10 Micron In-line Return Filter
- 50 Gallon Reservoir Tank
- White PPG Paint over Primer

#### OPTIONS

- Cart Tipper Attachment
- Grabber Attachment
- TL4 Hydraulic Container Locker
- Camera – Single or Dual
- Safety Work Light Package
- Additional Axles
- Customized Paint and Decals
- Spill Kit Package
- KANN Trough or Side Dump Containers for collection of additional commodities

The Kann Rear Loader is designed so it can easily be shipped loose and mounted on a chassis at the customers' location.



Kann Manufacturing also manufactures a full range of containers that can be mounted in front of the Kann High Compaction Rear Loader to make for a simple and economical multi-commodity collection unit.

### KANN Manufacturing Corporation

210 Regent Street  
Post Office Box 400  
Guttenberg, IA 52052 USA

Phone 563-252-2035 Email [sales@kannmfg.com](mailto:sales@kannmfg.com)  
Fax 563-252-3069 Web [www.kannmfg.com](http://www.kannmfg.com)

**\*\*\* The KANN PACK MASTER Series High Compaction Rear Loader is light in weight but with the strategically structured design makes it mighty in compaction\*\*\***